



# SMARTER ROAD REPAIR



# HOW CAN WE HELP REPAIR THE UK'S 37,000 MILES OF POOR ROADS?

Sunbelt Rentals is the world's leading equipment rentals provider. We serve Local Authorities and Councils, Ports, Highways, Airports, Construction, FM, Utilities and Event markets.

With 1.5 million items of equipment

3700 experts

200 locations nationwide

ONE Sunbelt Rentals

Leave the **how** to us.



# HOW CAN WE TAKE THE HEADACHE FROM LOCAL AUTHORITIES?



A POTHOLE IS FILLED EVERY  
**19 SECONDS**  
AT A COST OF £107.4M



OF THE NETWORK  
(36,918 miles)  
IS NOW DEFINED  
AS BEING  
**STRUCTURALLY  
POOR**

**56%**

of authorities  
reported a cut  
or freeze in  
their highway  
maintenance  
budget



A ONE-TIME CATCH UP WOULD TAKE

**9 YEARS**



TO COMPLETE AND COST

**£12.64BN**

THE AUTHORITIES' CARRIAGEWAY  
BUDGET SHORTFALL IS

**£1.06BN** ↓

Source: AIA, ALARM Survey, March 2022

# HOW DO WE MAKE ROAD REPAIRS SMARTER?

Traditional methods of road repair are costly, harsh on the environment, disruptive and often fail prematurely.

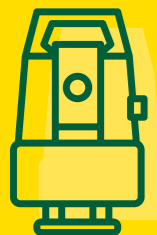
At Sunbelt Rentals we have invested in a revolutionary system that radically improves the road repair process. It's fast, more environmentally friendly and is more durable.



# OLD v NEW

TRADITIONAL METHODS	v	SMARTER ROAD REPAIR
Environmental impact 2.4 tons of CO2 per day	●	Environmental impact 0.4 tons of CO2 per day
Planer, paver, sweeper and bitumen sprayer, road closed	●	One vehicle and a roller, road open
Surface cutting causing noise and dust	●	Zero cutting required
Extra Traffic Management service required	●	Traffic management included
Traditional methods lose temperature in transport, resulting in poor compaction which allows voids for water ingress	●	Optimum temperature asphalt compacts better, increasing density and reducing air voids
Waste is created, needing to be disposed off site	●	All existing material is recycled in situ, with only the required amount of fresh material added
Joints needs to be sealed with bitumen and can fail over time	●	The repair is seamless with the existing road material

# THE 10 POINT SMART PROCESS



- 1.** The pre-site survey is carried out.
- 2.** The state-of-the-art Smart repair vehicle transports and maintains the asphalt at the optimum temperature.
- 3.** Our Traffic Management is deployed on site using a small operational footprint
- 4.** Any loose chippings are harvested to be recycled into the repair.
- 5.** There is no cutting involved. The digitally controlled Thermal Heater then heats up the surrounding surface to the optimum temperature to allow it to be mixed with the new asphalt.
- 6.** The surface is agitated, a bituminous liquid is added and the new asphalt mixed in with any existing loose materials, negating any waste, so zero transportation and zero landfill.
- 7.** The optimum temperature of the asphalt allows greater compaction, omitting air voids which cause water ingress and frost-heave.
- 8.** The repair material bonds seamlessly with the existing surface, negating any bitumen joints and risk of air voids.
- 9.** Once the affected area is complete it is ready to be driven on.
- 10.** The carriageway is returned to full operation.

# PROVIDING RENTAL PRODUCTS AND MANAGED SOLUTIONS INTO EVERY MARKET AND SECTOR



**PLANT & TOOLS**



**SAFETY & COMMUNICATIONS**



**BARRIERS & FENCING**



**PLANT ATTACHMENTS**



**SURVEY**



**RAIL**



**POWERED ACCESS**



**TEST & CALIBRATION**



**HOISTS**



**LIFTING**



**CLIMATE CONTROL**



**FORMWORK & FALSEWORK**



**POWER**



**ACCOMMODATION**



**TRAINING**



**INDUSTRIAL**



**TRAKWAY**



**LIGHTING**



**UTILITIES**



**TRAFFIC MANAGEMENT**



**NON-MECHANICAL EQUIPMENT**

# OUR PLANET IS OUR COMMITMENT

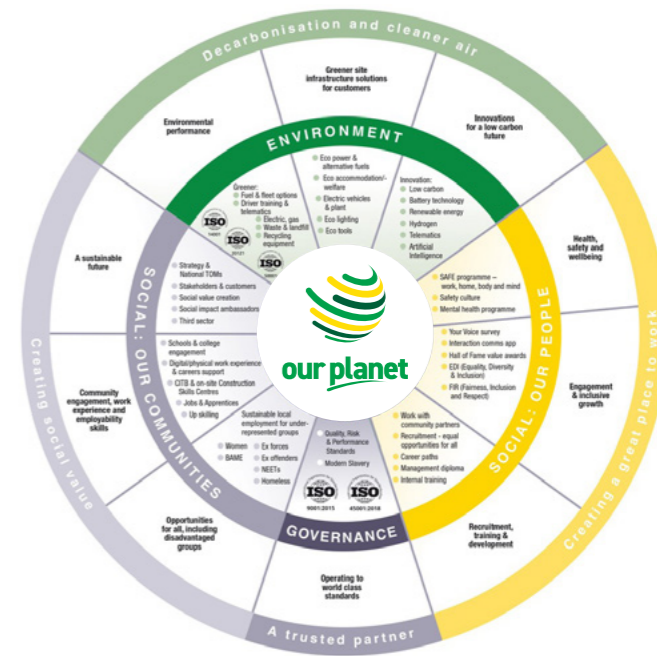
We are totally committed to acting responsibly and sustainably.

It's in our DNA - so much so that 'being responsible' is one of our core values. Everything we do is the right thing for our people, for you, for our communities and our planet.

Our Sustainability Plan 2030 aligns with eight of the 17 UN Sustainable Development Goals.

We are striving to create social impact, report social value and achieve lasting legacies through our day to day work.

We are already making a big difference in these areas, but through our strategy are focused on achieving more.





**For further information visit :**

[www.sunbeltrentals.co.uk/solutions/smarter-road-repairs](http://www.sunbeltrentals.co.uk/solutions/smarter-road-repairs)

**For a demo please contact :**

[smarterroadrepair@sunbeltrentals.co.uk](mailto:smarterroadrepair@sunbeltrentals.co.uk)

[www.sunbeltrentals.co.uk](http://www.sunbeltrentals.co.uk)

Powered by

