



**RENTAL  
EQUIPMENT  
AND TEMPORARY  
INFRASTRUCTURE  
SOLUTIONS  
FOR HEALTHCARE  
FACILITIES**







**As the UK's largest and greenest rental equipment provider, we're trusted by NHS Trusts and hospitals to deliver proven healthcare solutions.**

As a preferred partner for the Department of Health and Social Care we understand the challenges you face with managing your healthcare facilities and estates. We'll help you drive up your efficiency, monitor your performance against carbon reduction targets, and save you time and money with industry-leading and innovative specialist products and solutions designed for healthcare environments.

Whether it is a planned project or emergency response, our experts will work with you every step of the way. Providing solutions is what our business is all about. It's what we do best. Just tell us why, what and where. Leave the how to us.

# AIR QUALITY

**Maintaining good air quality is a leading priority in critical environments such as hospitals, pharmaceutical and clinical research areas.**

Good environmental hygiene significantly reduces cross contamination and transmission risk.

Infection control extends past airborne pathogens - risk of fatality increases by 80% in patients with already compromised immune systems when exposed to additional hazards, such as aspergillus mould and dust, caused by maintenance and construction works in clinical environments.

It is extremely important that adequate control measures are put in place when reviewing infection control risk assessments (HBN 00-09).

Our range of innovative products and solutions can help you improve and control your indoor air quality. Protecting staff and patients, without disrupting or delaying patient care.



# S400 AIR DISINFECTANT DEVICE

Crowded waiting rooms and busy wards can create the ideal breeding ground for harmful airborne viruses and other pathogens, posing a serious threat to staff and patients.

The S400 Air Disinfectant Device disinfects the air, creating a safe and comfortable environment for everyone. Unlike other air purifiers, the S400 combines HEPA filtration, UV-C technology and carbon filtration with fast-moving air to kill 99.9995% of all airborne viruses and germs in your environment within minutes.



REMOVE 99.9995% OF  
ALL AIRBORNE VIRUSES AND  
GERMS WITHIN MINUTES



SCAN ME  
FOR MORE  
INFORMATION



# HEPACART® MOBILE CONTAINMENT CART

HBN 00-09 Compliant  
IHEEM VTP/BN/001 Recommended

Carrying out unplanned maintenance or essential works in critical environments can often mean moving patients to other wards, or even delaying patient care.

With the HEPACART® Mobile Containment Cart you can quickly create a safe and contained space, protecting staff and patients whilst they carry out normal activities.

As the only containment cart with an embedded Negative Air Machine and lab-tested filtration system with medical grade HEPA 99.99% at .3 microns and pleated MERV 10 pre-filter, the HEPACART® Mobile Containment Cart makes dust containment and infection control in high-risk environments easier to handle, without compromising on essential safety protocols.

Uses include creating a safe space for removing ceiling tiles, minor duct work or electrical work above ceilings in hospitals or other sensitive environments.



CREATE SAFE SPACES TO CARRY OUT ESSENTIAL MAINTENANCE  
WITH MEDICAL GRADE HEPA 99.99% AT .3 MICRONS FILTRATION

SCAN ME  
FOR MORE  
INFORMATION





# HEPACART® ANTEROOM

HBN 00-09 Compliant

**When undertaking maintenance, renovation or construction in healthcare facilities it is important to reduce the risk of contamination between clean spaces and the contaminated zone.**

The award winning HEPACART® AnteRoom is a temporary room isolation module, with external negative air machine adapters on either side, serving as an entryway or vestibule into any larger room undergoing works.

It is mobile, extendable and easy to install within five minutes, providing total room isolation for any door size. The AnteRoom is the perfect containment measure to mitigate patient risk from work dust and other related contaminants.



**PROVIDING TOTAL ROOM ISOLATION TO MITIGATE PATIENT RISK FROM WORK DUST AND RELATED CONTAMINANTS**

SCAN ME  
FOR MORE  
INFORMATION



# STARC® WALL SYSTEMS

HBN 00-09 Compliant

**When you need to complete works within a patient or clinical area, it can be a challenge to create a complete barrier that segregates the clean area from the contaminated zone, whilst maintaining a high level of patient comfort.**

The STARC® Wall System exceeds standards as a simple, easy-to-use and environmentally friendly alternative to other temporary dust containment options.

The easily disinfected airtight walls can be configured in virtually any shape, whilst the telescopic design ensures an airtight seal, no matter what the shape or size of the contained space.

STARC® Wall Systems offer an effective, fast and reliable solution to containment, infection control and noise complaint issues, providing 25 decibel sound reduction with an insulated urethane foam core.



**AIRTIGHT BARRIER SYSTEM WITH  
25 DECIBEL SOUND REDUCTION FOR  
IMPROVED PATIENT COMFORT**

# FACE FIT TESTING

**Where respiratory protective equipment (RPE) is used as a control measure under health and safety legislation, it is vital that the selected RPE is both adequate and suitable.**

To ensure that the selected RPE has the potential to provide adequate protection for individual wearers, the Approved Codes of Practice (ACOPs) supporting the Control of Substances Hazardous to Health Regulations (COSHH), the Control of Lead at Work Regulations, the Control of Asbestos Regulations, the Confined Spaces Regulations and the Ionising Radiations Regulations stipulate that tight-fitting RPE should be fit tested as part of the selection process.

## **We offer:**

- FIT2FIT accredited quantitative and qualitative face fit testing
- Qualitative and quantitative train the tester courses
- RPE user's training
- RPE maintenance and servicing
- RPE supply
- Powered respirators
- Qualitative and quantitative test kits and solutions

**WATCH HOW WE CARRIED OUT OVER 6,000 CRITICAL FACE FIT TESTS FOR THE NHS DURING THE COVID-19 PANDEMIC**







# TEST & MONITORING

With many buildings and facilities used across the healthcare sector old and in need of major upgrade works, carrying out any maintenance can pose its own risks.

Being able to monitor, measure and record a wide range of environmental factors during essential works can help to protect workers from exposure to harmful substances, gases and noise levels.

We're able to supply a wide range of hand-held devices and monitoring stations to monitor everything from dust and particulates, sound and vibration to temperature and humidity.

**SCAN ME TO VIEW OUR COMPLETE RANGE OF TEST AND MONITORING EQUIPMENT AND HIRE ONLINE**



# ALERT PRO 2000 REAL-TIME ASBESTOS DETECTION

Asbestos is commonly found in buildings constructed or refurbished before the year 2000, and with many healthcare practices occupying facilities built over 30 years ago it poses a real threat to workers carrying out essential maintenance.

The Alert Pro 2000 provides workers with additional protection in potentially hazardous areas by alerting when asbestos fibres are detected in the environment. The device uses light scattering technology and the paramagnetic properties of asbestos to detect fibres and alert when it is 99% confident asbestos is in the atmosphere.

Through an online portal you'll be able to configure your own dashboard to display alert results for tracking and monitoring purposes.

**THE WORLDS FIRST AND ONLY  
REAL-TIME DETECTION TO PREVENT  
PROLONGED AND UNINTENTIONAL  
EXPOSURE TO ASBESTOS**



# TROLEX AIR XS SILICA MONITOR

**Silicosis is the most common occupational lung disease in the world today. Inhaling harmful silica dust can eventually lead to this deadly respiratory disease.**

The Trolex Air XS silica monitor is designed to provide accurate, reliable and real-time data on respirable crystalline silica (RCS) levels in challenging environments.

The unit deploys Optical Refraction Technology alongside Optical Particle Counting capability to quantify a series of markers unique to silica.

Using the Trolex Breathe+ high speed crystallinity detection algorithm, real-time results are processed, and a triple voting system is triggered to identify harmful silica content.



**START MONITORING FOR DEADLY RCS  
IN FIVE SECONDS FROM START-UP**

**SCAN ME  
FOR MORE  
INFORMATION**





# POWER QUALITY TESTING & ANALYSERS

There are few places where having accurate and reliable results is as important as in healthcare settings.

Power quality analysers are useful in healthcare settings because they help ensure that medical equipment within the facility receives a stable and reliable power supply.

Your power quality can be impacted by a range of factors including voltage disturbances, such as outages, transients and current harmonics to performance wiring and grounding issues.

Poor power quality can lead to intermittent lockups and resets, corrupted data, premature equipment failure and components overheating.

Power quality analysers can also be used for critical medical equipment, such as ECG machines, to ensure they are giving accurate readings when measuring electrical signals from vital organs, avoiding delays to life saving care or inaccurate diagnosis.

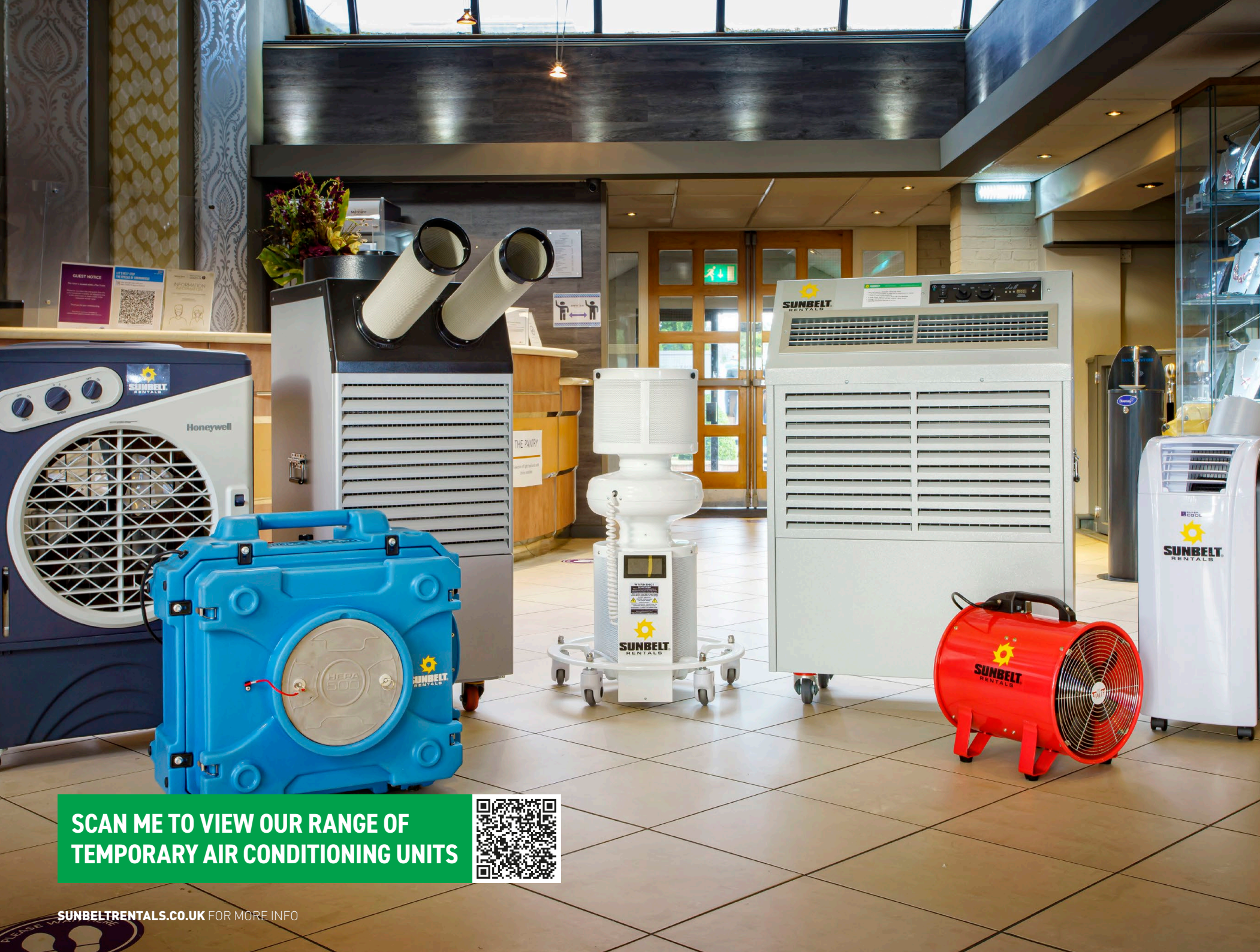
The changing and complex nature of healthcare facilities can often lead to power quality issues downstream through the mains distribution system. Using a power quality analyser will allow your team to quickly identify any power quality issues and pinpoint where the problem is coming from.



SCAN ME TO HIRE THE FLUKE 1777  
CLASS A POWER QUALITY ANALYSER







# CLIMATE CONTROL

17

**Controlling the temperature in healthcare settings is not only important for patient comfort, but also health and safety.**

Bacteria and fungi thrive in warmer environments making it easier for them to spread between patients and staff. Whilst vital infrastructure, such as server rooms, laboratories and theatres, need to remain at constant cooler temperatures to stay operational.

We're well equipped to support the unique needs of healthcare facilities through our extensive range of temporary heating and cooling equipment, as well as emergency and planned chillers and boilers.

Fixed air conditioning units can be costly to run and often difficult to maintain or install in older buildings, and when the weather hits those higher temperatures you sometimes need additional support to keep environments comfortable.

## **Portable Air Conditioning and Cooling**

Our portable air conditioners and coolers offer a versatile solution suitable for a wide range of spaces, from waiting areas and wards to server rooms.

They are quick to install, easy to move, and cost effective to run. Our climate control team will also provide expert guidance on how to position each unit to make sure you're getting the most from it.

**SCAN ME TO VIEW OUR RANGE OF TEMPORARY AIR CONDITIONING UNITS**





# EMERGENCY AND PLANNED CHILLERS AND BOILERS

When your HVAC system goes down, or during extreme weather conditions when you need additional capacity, our chillers and boilers will help to keep your facilities operational at all times.

From providing low temperature hot water and steam for patient care, to keeping theatres and scanning equipment at required temperatures, we're able to deliver, install and manage industrial chillers and boilers.

Our free of charge contingency planning service provides you with peace of mind that if the worst does happen you have a plan in place to avoid costly disruption to providing care. Our team will be on hand to react as soon as you need us, we'll even supply you with a copy of the plans.

**AVOID COSTLY DISRUPTIONS  
WITH OUR FREE OF CHARGE  
CONTINGENCY PLANNING SERVICE**

[SUNBELTRENTALS.CO.UK](https://sunbeltrentals.co.uk) FOR MORE INFO





# CLEAN ENERGY SOLUTIONS

**As we all work towards lowering our carbon footprint we must consider greener alternatives in everything we do.**

Should you require a temporary power solution at your site or facility, our Clean Energy team will identify the lowest carbon solution that will also reduce costs and noise pollution.

Through the use of renewable energy technologies including Battery Storage Units (BSUs), Solar Arrays and intelligent Energy Management Systems (EMSs) they will design, supply and install a temporary power solution that not only maximises energy efficiency and reduces fuel costs but will also reduce noise pollution and lower CO2 emissions, improving comfort and air quality for both staff and patients.

## Battery Storage Units

Battery Storage Units work alongside traditional power solutions, such as generators to create a hybrid power solution, and can reduce the running time of your generator by an average of 50%, and in some cases as much as 80%. This saves fuel costs and supports a cleaner environment.

We have the largest fleet of Battery Storage Units available in the UK and can provide reports on fuel usage and carbon emissions to support your sustainability strategy.

## Energy Management Systems

Our Energy Management Systems manage the demand of power to avoid unnecessary peaks.

The system intelligently switches non-essential assets off when demand spikes. As energy consumption is reduced, so are your costs.

An Energy Management System is also able to consider and schedule the ambient outside temperature so that space and water heating can be optimised.

**REDUCE YOUR GENERATOR RUNNING TIME BY AS MUCH AS 80%, SAVING COST AND CARBON EMISSIONS**



**SCAN ME TO FIND OUT MORE ABOUT OUR CLEAN ENERGY SOLUTIONS**



# CRITICAL POWER

The continuation of power throughout any interruption to normal supply, planned maintenance or an unplanned emergency, is critical to many businesses and sectors, but none more so than healthcare.

We've supported the critical power needs of dozens of clients within the healthcare industry for many decades, providing solutions that ensure the continuation of power in hospitals, speciality units and hospices.

Whether you require a new back up power solution, want to test, upgrade or review your existing solution or need support for planned maintenance our expert team can advise, design, supply and install.





# TRUSTWORTHY DATA AT YOUR FINGERTIPS WITH BUILDING INFORMATION MODELLING (BIM)

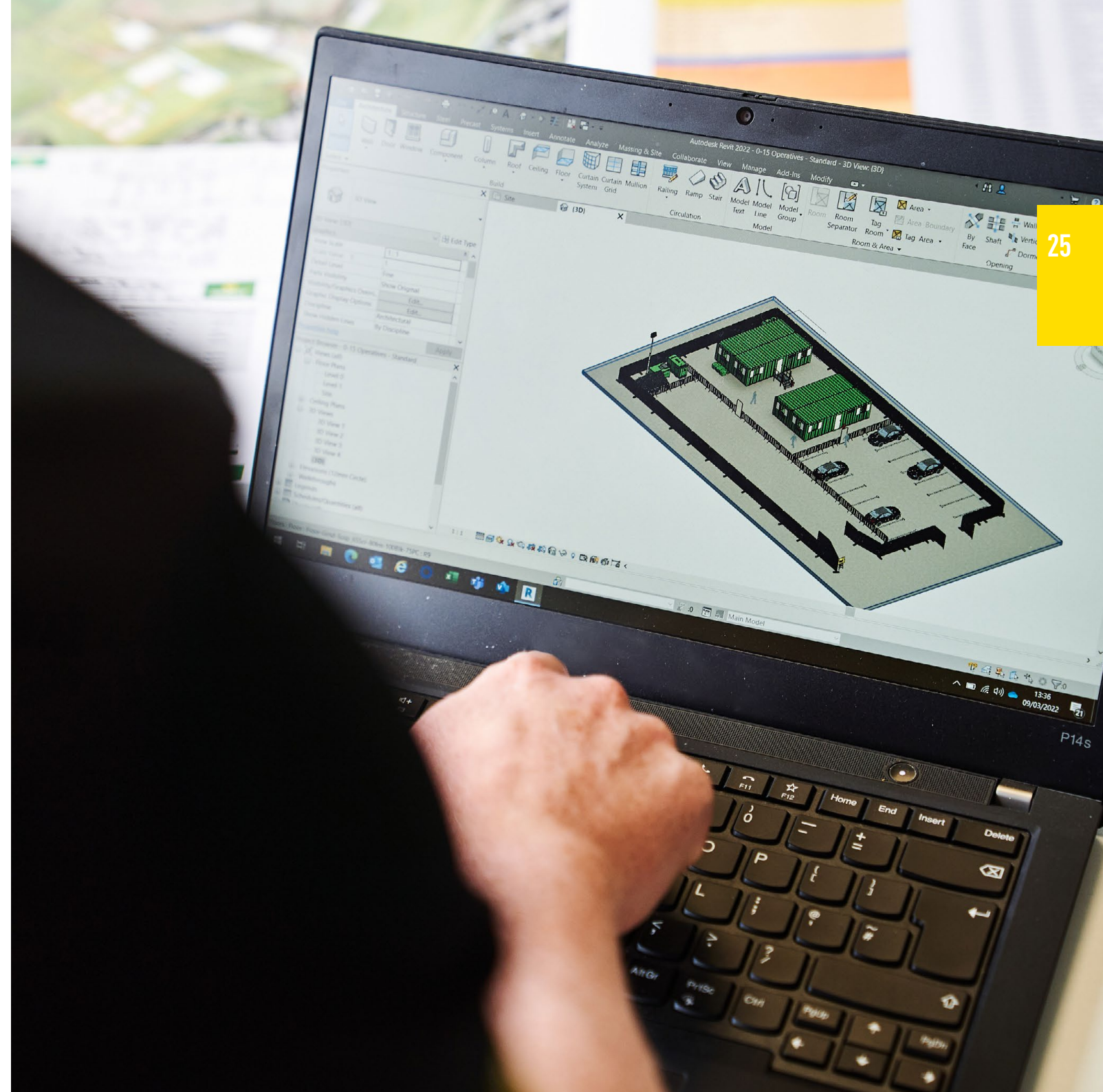
Having access to precise and accurate data when carrying out maintenance and essential works can significantly reduce your time and costs by ensuring you get it right first time.

Building Information Modelling (BIM) gives you the power of trustworthy data at your fingertips for temporary work assets enabling you to make informed decisions to maximise efficiency, safety and sustainability, whilst minimising waste and costs right across the supply chain.

Our extensive BIM library allows you to download a huge range of assets into your digital site, then overlay them onto scans or scaled drawings and add product data directly into your calculations.

You'll be able to see everything from dimensions to features including lighting patterns, lifting points, safety zones, turning circles and sustainability impacts. Alternatively, using industry-leading surveying equipment we can assist with scanning your facility and creating a digital twin, utilising the assets from our BIM library within the model.

SCAN ME TO FIND OUT  
MORE ABOUT BIM







# TEMPORARY INFRASTRUCTURE SOLUTIONS

Whatever your challenge, however big or small, whether planned or an emergency response, we can help make it happen – whatever it takes.

We are uniquely placed as the only rental company in the UK to offer a complete temporary infrastructure solution.

From creating additional space with temporary accommodation, heating, power and welfare facilities, to project managing large scale operations, our 360 Solutions team provide a one-stop-shop solution that is completely tailored to your project and requirements, with 24/7 support and measured results, using telematics, to help you manage costs and emissions.

## Define

Our team of experts will consult with you to gain a detailed understanding of your project. From this we'll define your requirements and create a bespoke proposal.

## Design

Using the latest CAD and drone technology, we'll assess the site location and create a comprehensive project plan.

## Deliver

Our operations team will co-ordinate, deliver, install and manage all products and services provided, working with our strategic partners to offer any non-core services required.



# STONELEIGH VACCINATION CENTRE CASE STUDY

Every winter the NHS prepares for the unpredictable, yet recurring pressure of the seasonal flu. The long-established flu immunisation programme runs each year across England to reduce harm from flu and pressures on health and social care services.

The service is offered to patients who are particularly susceptible to the flu, for example, because of their health condition, age or because they are pregnant. The 2022 programme includes the addition of COVID-19 boosters.

Regional health providers can decide the location of vaccination sites, but they often work within a limited budget. Where local demand is exceptional, these providers often require extra space and look for temporary structures to achieve capacity.



## The Challenge

The Kenilworth & Warwick Primary Care Network Covid Vaccination Centre required additional space to run the immunisation programme across this part of Warwickshire.

Our client decided on a drive-thru vaccination site at Stoneleigh Park in Coventry, which had to be delivered quickly and efficiently. The site would need to allow patients in two cars to drive through at the same time, receive their jabs, and drive off safely.

## The Solution

During the COVID-19 pandemic, Sunbelt Rentals successfully built, managed, and demobilised 600+ testing sites in the UK and Ireland. We offered a 360 solution, bringing together all our expertise to deliver an end-to-end managed service. The Kenilworth & Warwick Primary Care Network Covid Vaccination Centre relied on our ability to define, design, and deliver a temporary infrastructure with two lanes, to allow patients to receive their immunisations.

We appointed an experienced project manager to oversee the delivery of the programme and ensure all requirements and expectations were met. The project manager conducted a site survey alongside our design team and created a bespoke and complete solution to meet the client's needs. Once the design was agreed, our team mobilised the site within two days.

Throughout the project, the project manager acted as a single point of contact for the client, ensured equipment was well-maintained, and supplied weekly performance reports.

## The Results

Utilising our unique experience in deploying no-notice, temporary site solutions, Sunbelt Rentals responded to the client's requirements promptly – delivering a bespoke solution within two days.

This allowed the medical centre to focus on keeping the local community safe by carrying out the essential dual vaccination programme to patients in the area.

## Our 360 Solutions team delivered:

- A marquee with concrete blocks
- Plant equipment: A telehandler, forklift and scissor lift
- Welfare units: Accommodation, effluent tank, portaloo and heaters
- Power: 60kva Generator and 2000 litre fuel tank
- Lighting: Tower lights and slam lights
- Traffic Management: Traffic signs and sandbags
- Safety and Communications equipment

# DID YOU KNOW YOU CAN BUY AS WELL AS HIRE FROM US?

Who better to buy from than the experts you hire from? Our wide range of quality equipment, tools, fuels and gasses have been handpicked, tested and approved by our sector product specialists.

You can choose from all the leading brands and order from thousands of stock items, with next day delivery to your site.

## Consolidate suppliers and deliveries

Why give yourself the hassle and headache of dealing with multiple suppliers when we do it all? You can even consolidate your deliveries to save time, resource and fuel emissions.

## We buy big so you could save big

Whether we're buying for hire or sale, we have great relationships with manufacturers, meaning you'll save by buying from us.

## Fast delivery

Order from thousands of stock items with next day delivery, direct to your site.

## Widest product range

Whatever the product, you can choose from a wide range of equipment, tools, fuels and gasses.

## Chosen by experts

We only sell what our experts recommend, so you can be assured of top brand quality and sector suitability.

## Full warranties

Everything we sell is covered by a full manufacturer's warranty, giving you lasting peace of mind.

## Dedicated Product Sales Support Desk

Buy all your equipment, tools, fuels and gasses, with support from our highly experienced dedicated Sales Teams.

T: 0808 196 9493

E: [ProductSales@sunbeltrentals.co.uk](mailto:ProductSales@sunbeltrentals.co.uk)

[www.sunbeltsales.co.uk](http://www.sunbeltsales.co.uk)

**200+**   
**local depots**  
across the country

**42,000 sq.ft**  
**DISTRIBUTION**  
in the heart of the UK



 **DEDICATED**  
**EXPERIENCED**  
Product Sales Team

 **expertise**  
from sector specialists

**EVERYTHING**   
you need from  
**ONE TRUSTED SUPPLIER**

**CONSOLIDATED**  
**DELIVERIES**  
to save time, manpower

**& CARBON**  
**EMISSIONS**



Huge range of

 **equipment**  
**consumables**  
**gas & fuels**

from major manufacturers

Specialist products chosen by  
**EXPERTS**



Survey, powered access, safety etc.



# PROVIDING RENTAL PRODUCTS AND MANAGED SOLUTIONS INTO EVERY MARKET AND SECTOR



## Plant

The widest range of plant including the latest Stage V and battery powered machines in the UK



## Industrial

On your site to meet the demands where every second counts



## Climate Control

Economical and efficient temperature control and HVAC solutions



## Rail

We support the Network Rail and Transport for London infrastructure



## Plant Attachments

The sole UK distributor for several of the world's leading attachment manufacturers



## Utilities

The UK's largest specialist Utility hire company



## Accommodation

24/7/365 call out facility covering 20,000 items on fleet



## Hoists

We hold over 10km of mast sections, enough to scale London's Shard building over 32 times



## Powered Access

The combined height and reach of our equipment can transport you safely over 50,000 metres



## Safety & Communications

Knowledgeable and experienced specialists in this field



## Trakway

Award winning engineered access and ground protection solutions



## Formwork & Falsework

We are the exclusive hire supplier of MEVA products in the UK



## Lifting

Our solutions have been used on 7/10 of the tallest buildings in the UK



## Survey

Industry-leading supplier of land survey and precision measurement technologies



## Traffic Management

24/7 national coverage with operations covered by QEHSS accreditations



## Training

Dedicated Health and Safety training to qualify our own people and our customer's people



## Energy

From fuel saving cleaner energy solutions to the latest stage v generators, we have a temporary power solution for every site



## Test & Monitoring

Europe's leading test equipment specialists since 1996



## Barriers & Fencing

Crowd control and perimeter security solutions



## Lighting

The UK's largest fleet of state-of-the-art tower lights, including a wide range of solar, hybrid and plug-in options



## Tools

From battery powered hand tools to compressors, compactors and cleaning equipment we offer a wide range of tool hire that's local to you



## Non-Mech

Essentials for every site; fencing, barriers, trenching, ground protection, vehicle and pedestrian control solutions



## Film & TV

From cameras, grip and lighting to backlot infrastructure





our planet

# INNOVATING CHANGE. PROTECTING OUR PLANET.

## Our Planet is our action plan.

It's inspired by one clear purpose: to transform lives and lead positive change across the rental industry. Together we'll deliver a better future, a greener climate, thriving communities, successful customers, and engaged colleagues providing greater social impact.

With sustainability, innovation and business governance at the heart of our plan, we are committed to driving emissions down, helping you achieve your sustainability goals today and developing tomorrow's essential skills and jobs.

SCAN ME TO FIND OUT MORE ABOUT  
OUR PLAN FOR A GREENER FUTURE





**Trusted estates and facilities management**

**Specialist healthcare products**

**Proven expertise**

**Leave the **how** to us.**

**enquiries@sunbeltrentals.co.uk**  
**www.sunbeltrentals.co.uk**